



BAYFEANCY





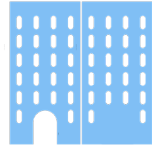
Bayfancy Residence is located at
Hulhumale Phase II facing marina
The building surrounded by a green park
a mosque and two schools
Affiliated with a waterfront commercial complex



FEATURES OF BAYFANCY RESIDENCE



Prime
Location



Stylish Architectural
Design



Vertical
Greenery



Grand
Lobby



State-of-the-art
Amenities



Smart Home
Technology



Eco-friendly
Living Style



Concierge-style
Property Services

LOBBY

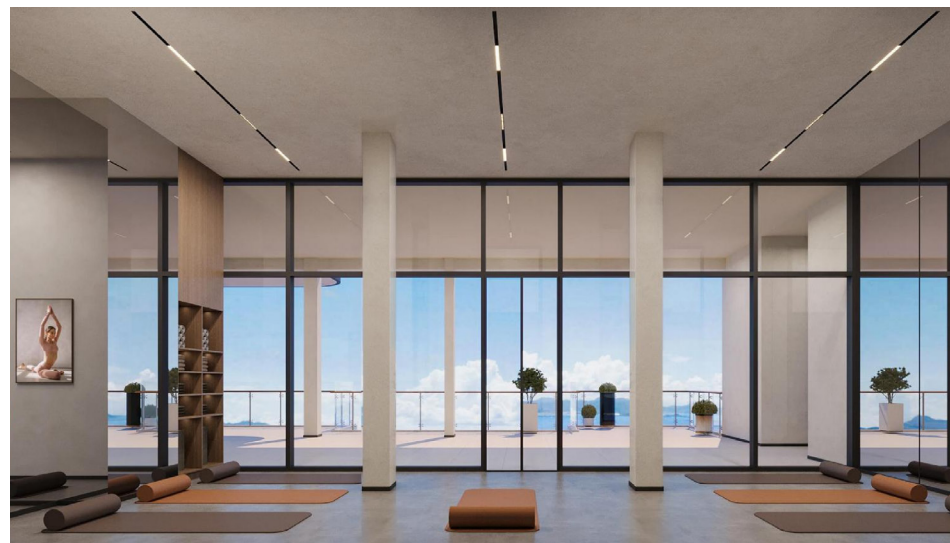


INFINITY POOL



Bayfancy Residence combines architectural beauty with an urban oasis, offering stunning coastal views. Enjoy our infinity pool with beautiful blue sky and enjoy luxurious living with lush, premium amenities. And seamless access to vibrant commercial and recreational hubs.





AMENITIES



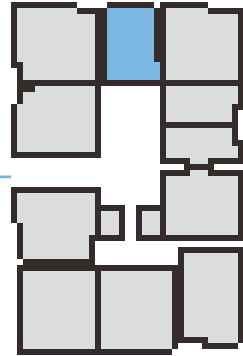
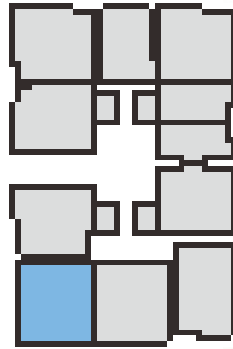
3+1
BEDROOM

1553.99-2035.35 SQFT



2+1
BEDROOM

1122.68-1139.04 SQFT





YOUR LIVING SPACE





YOUR PRIVATE
TERRACE



 +960 400 1188

 Developer: Bayfancy Private Limited

 www.bayfancy.com

 Lot 20092, Fithuroanu Magu, Hulhumale Phase II 23000, Maldives

Disclaimer: This Sales Kit is for internal reference only. All details subjected to change without prior notice. All images are designer's impression only. While every effort has been made to ensure the information in this Sales Kit presentation is accurate, Bayfancy Pte Ltd accepts no liability whatsoever for any errors, inaccurate or omissions and shall not be bound in any manner by any information contained in this Sales Kit Presentation. No information shall be construed as advice and no financial and/or investment decision should be made based on the information provided.